

2-port eSATA ExpressCard

User's Manual

Introduction	2
Important Reminders.....	2
Getting Started	2
Installing the ExpressCard	3
Verify Driver Installation	4
Safe removal of the ExpressCard	5
Notices and Classifications	6

Introduction

The 2-port eSATA ExpressCard enables connection of up to two SATA devices with eSATA connectors to notebook computers with a 34mm/54mm ExpressCard slot. The onboard Serial ATA2 controller increases system throughput with 3Gb/s maximum burst rate SATA devices.

Please thoroughly read and follow the instructions provided in this manual. Failure to do so may result in damage to the ExpressCard, the host, and any or all connected devices.

Important Reminders

- 1) Ensure that potential static electricity is discharged from any objects the ExpressCard may come in contact with prior installation.
- 2) Insert the ExpressCard into an available ExpressCard slot ensuring that the direction of the ExpressCard is aligned with the direction of the ExpressCard slot.

Getting Started

For ExpressCard without RAID management

PC

- 1.5GHz or faster CPU
- 512MB of RAM
- Microsoft Windows 2000, XP, XP x64, 2003, 2003 x64, Vista, Vista x64
- One ExpressCard/34 or ExpressCard/54 slot

Mac

- Macintosh Intel Core Duo processor or Intel Core 2 Duo processor
- 512MB of RAM
- Mac OS X 10.4 or higher
- One ExpressCard/34 or ExpressCard/54 slot

For ExpressCard with RAID management

PC

- 1.5GHz or faster CPU
- 512MB of RAM
- Microsoft Windows 2000, XP, XP x64, 2003, 2003 x64, Vista, Vista x64
- One ExpressCard/34 or ExpressCard/54 slot

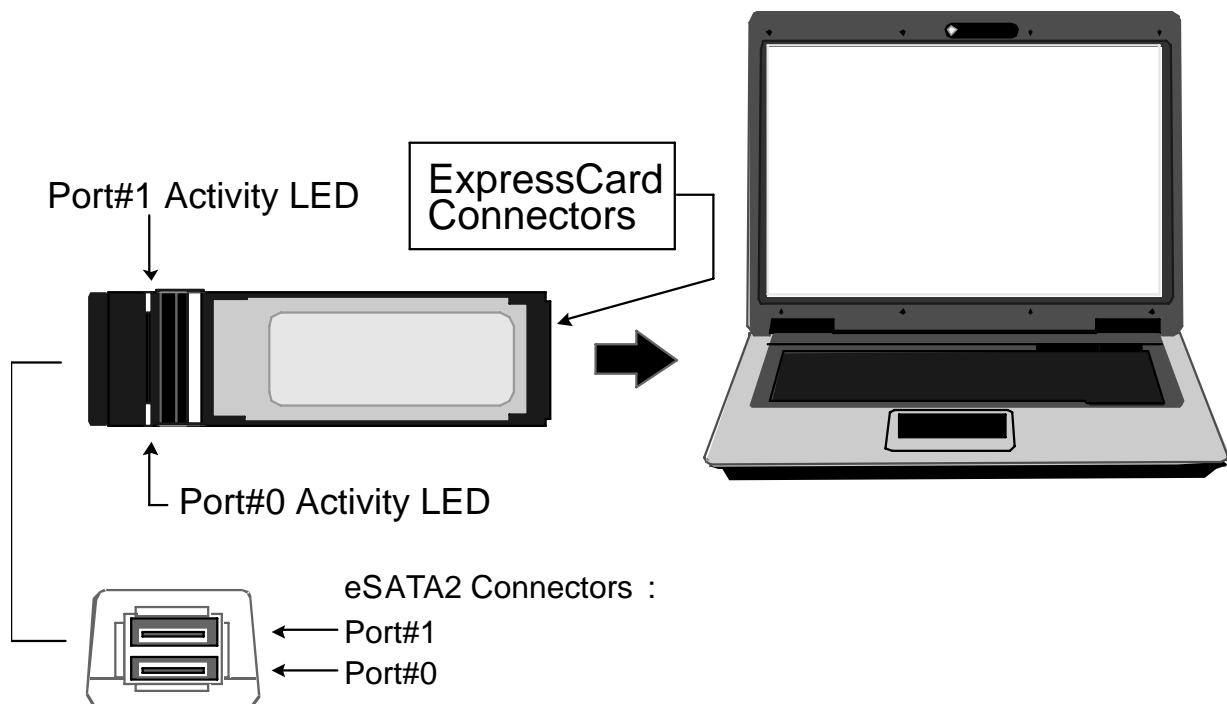
Installing the ExpressCard

Install your ExpressCard by completing the provided steps. Because the ExpressCard is hot-plug capable, the host system does not need to be powered off before installing the ExpressCard.

- 1) Insert the ExpressCard into an available ExpressCard slot ensuring that the direction of the ExpressCard is aligned with the direction of the ExpressCard slot.
- 2) In systems running Windows the “Add New Hardware Wizard” will open automatically, insert the installation CD included in the ExpressCard package, navigate to and open the installation file. Follow the onscreen prompts to complete installation. For Mac OS, insert the installation CD and locate the Mac driver installation file. Follow the onscreen prompts to install the driver.

Note: ExpressCard with RAID management does not support Mac OS.

The ExpressCard provides two stacked eSATA ports. The lower port is designated as port #0 and the upper port is designated as port #1. Use an eSATA-to-eSATA cable to connect the eSATA devices.



For ExpressCard with RAID management

If your notebook does not support RAID BIOS, install the RAID GUI Utility. Please refer to [SiliconImage_SATARAID5-UserGuide_v1.40.pdf](#) located on the Installation CD.

Verify Driver Installation

Navigate to the “Device Manager” to verify that the driver has been installed.

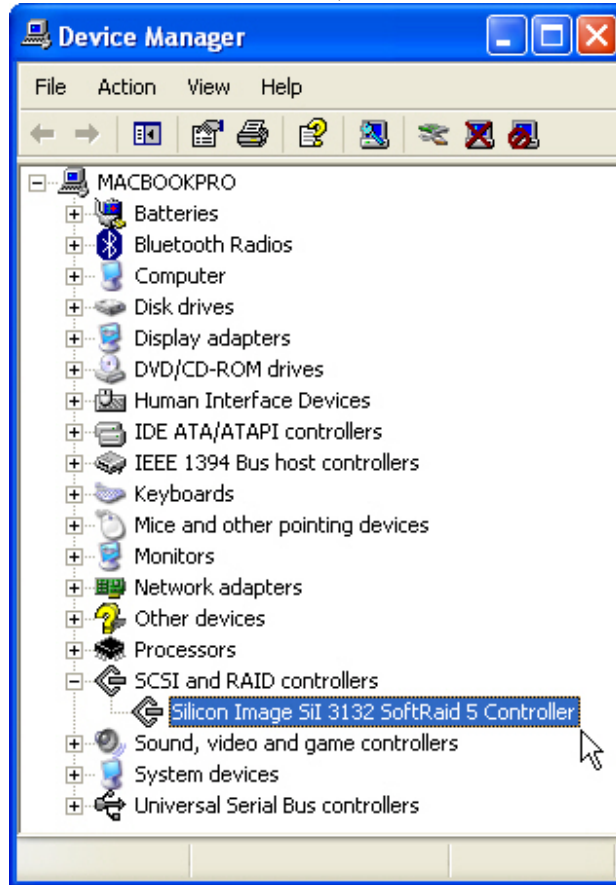
For ExpressCard without RAID management

Double-click “SCSI and RAID Controllers”, if there is no yellow “!” or “?” next to the “Silicon Image Sil 3132 SATALink Controller”, the driver has been correctly installed.



For ExpressCard with RAID management

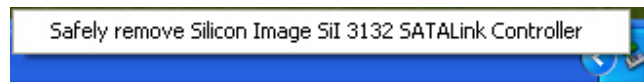
Double click “SCSI and RAID Controllers”, if there is no yellow “!” or “?” next to the “Silicon Image Sil 3132 SoftRaid 5 Controller”, the driver is correctly installed.



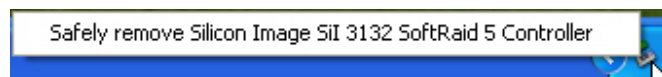
Safe removal of the ExpressCard

To safely remove the ExpressCard, click the “green arrow” icon in the system tray and select your ExpressCard as shown below.

For ExpressCard without RAID management



For ExpressCard with RAID management



Notices and Classifications

FCC-B Radio Frequency Interference Statement

This device complies with part 15 of the FCC rules. Operation is subject to the following two conditions:

- (1) This device may not cause harmful interference.
- (2) This device must accept any interference received, including interference that may cause undesired operation.

Note: This equipment has been tested and found to comply with the limits for a class B digital device, pursuant to part 15 of the FCC rules. These limits are designed to provide reasonable protection against harmful interference when the equipment is operated in a commercial environment. This equipment generates uses and can radiate radio frequency energy and, if not installed and used in accordance with the instruction manual, may cause harmful interference to radio communications.